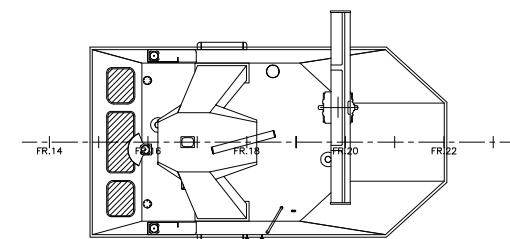
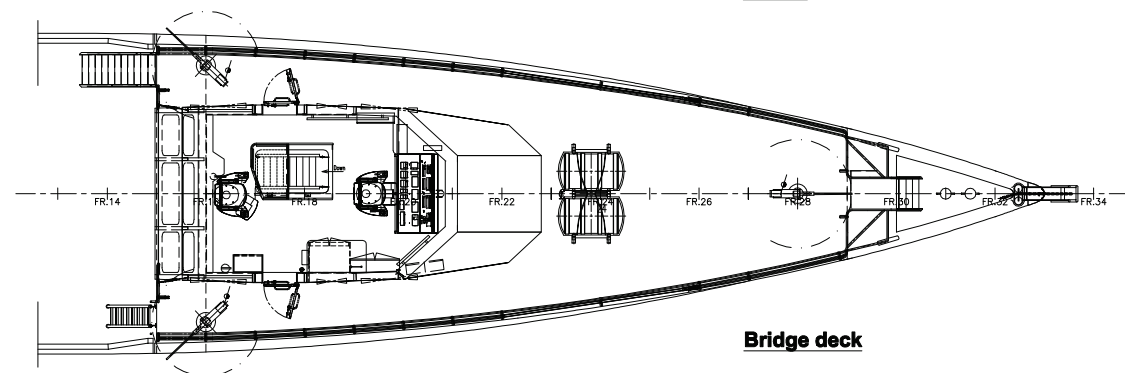


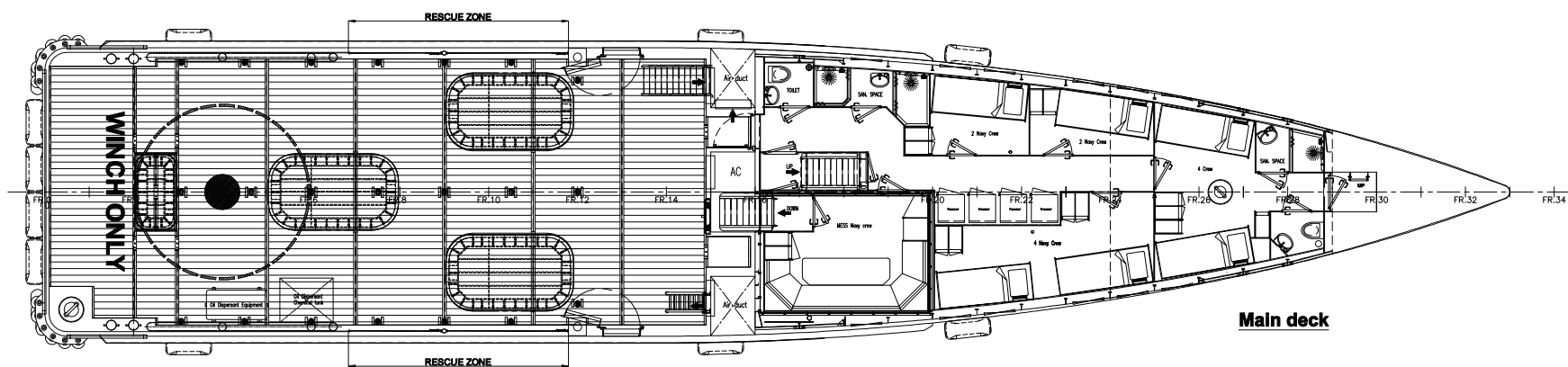
Profile



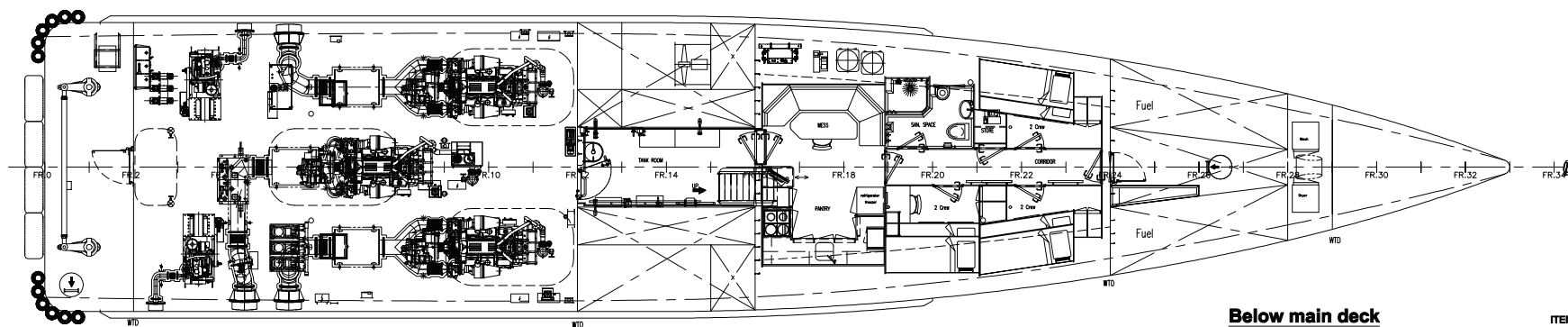
Top of wheelhouse



Bridge deck



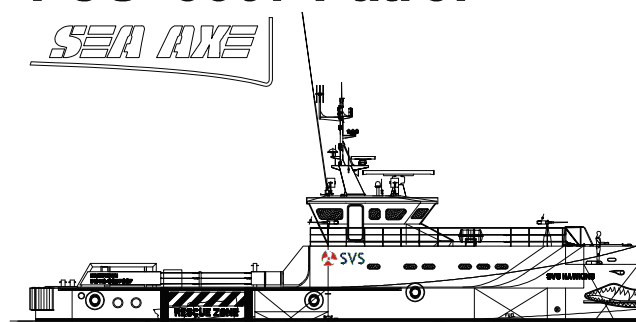
Main deck



Below main deck

ITEMS MARKED / ARE OPTIONAL EQUIPMENT

0cm 5 10cm



Damen

FCS[®] 3307 Patrol

SEA AXE

Principal dimensions:

Length o.a.	33.32 m
Beam o.a.	7.35 m
Depth at sides	3.30 m
Draught aft (approx.)	1.95 m

C	04-04-2012	Mukul		As-Built	
B	08-02-2012	gk	mk	Deleted wash bow; added 2nd boiler, RC; updated oil spill tank.	
A	23-11-2011	gk	mk	Updated top deck, WH, FO separator, etc.	
REV	DATE	DRWN	CHKD	APPRVD	REVISION SUBJECT
	approved			date	
					General Arrangement
					The information and data contained herein are proprietary to Damen Shipyards and are not to be copied, reproduced, duplicated or disclosed to others, in whole or in part without prior written consent of Damen Shipyards.
drawn :	O. Haga		ship type :	Fast Crew Supplier 3307	
plg/plr :			yardnumber(s) :		
date :	14-09-2011	A1	scale :	1:75	derived fr. drwg. no. :
ACAD :	S		drwg. no. :	FCS 3307-0000/p236717	